

TECHNICAL DATA SHEET **BENCHES**

TABLES AND BENCHES FOR DINING ROOMS





CHARACTERISTICS

Painted steel structure option

- Made of steel tube of 1.5 mm thickness.
- Painted in grey RAL 7035 Micro-textured finish. Minimum thickness of the coating: 50 microns.
- Welded structure.
- Great resistance.
- Including PVC end caps.
- Seats can be folded down towards the inside of the table.

Stainless steel structure option

- Made of 1.5mm thick stainless steel tube.
- Welded structure.
- Great resistance.
- Including PVC end caps.
- Seats can be folded down towards the inside of the table.

Melamine table top and seating option

19 mm thick medium density fibreboard covered with decorative paper impregnated with melamine resins.

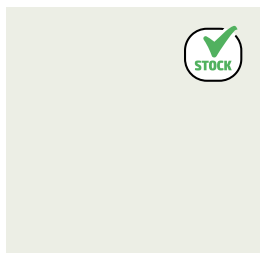
Property	Test method	Requirement
Thickness <i>(at one and the same panel and between panels)</i>	UNE-EN 324-1	±0.3mm
Length <i>(Between nominal and real)</i>	UNE-EN 324-1	±5.0mm
Width <i>(Between nominal and real)</i>	UNE-EN 324-1	±5.0mm
Squared timber cut	UNE-EN 324-2	2.0mm/m
Content of humidity	UNE-EN 322	Between 5% y 13%
Density <i>(variation at the average density of a panel)</i>	UNE-EN 323	±10%
Formaldehyd <i>(Class E1)</i>	UNE-EN 120	Less than 8 mg/100 g dry panel

Option Table top and seats in HPL

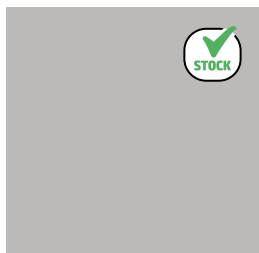
- Made with compact slats of phenolic resins (High Pressure Laminated HPL).
- Rigid material, hydrophobic, antibacterial and recommended for wet areas.
- Highly resistant against wear, that is why it is ideal for applications with a high index of use and frequent cleaning.
- Core of black/ brown colour.
- According to the european norms EN 438-1 and EN 438-2.
- Density 1450 Kg/m³ according to DIN 53479.
- Water-absorbption of less than 3%.
- Panel of 10 mm thickness.
- Rounded edges.
- Maintenance-free.



HPL COLOURS (SLATS)



WHITE
F-085



LIGHT GREY
F-0074



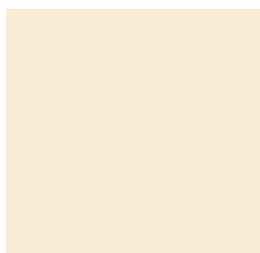
DARK BLUE
M-0717



DARK GREY
F-0077



RED
F-0210



CREAM
F-0851



YELLOW
F-0010



ORANGE
F-0011



LIGHT GREEN
F-0725



DARK GREEN
F-0591



TURQUOISE
F-0876



BURGUNDY
F-0318



LIGHT BLUE
F-0718



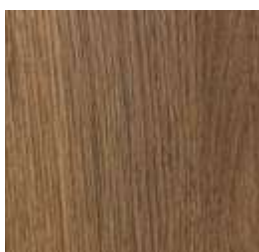
ALUMINIUM
F-0193



BLACK
F-0080



LIGHT WOOD
FM-100



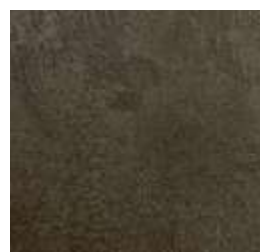
DARK WOOD
FM-200



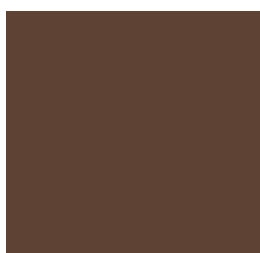
ASH OAK
F-3235



ROCK CEMENT
F-0026



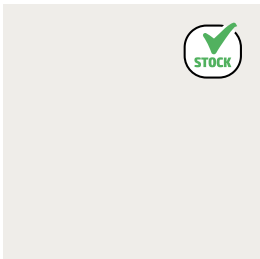
EARTH CEMENT
F-0027



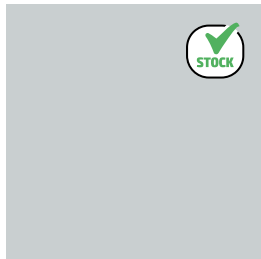
CHOCOLATE
F-0863

MELAMINE COLOURS (SLATS)

WATER-RESISTANT MELAMINE COLOURS



WHITE
M-060



LIGHT GREY
M-34W



RED
M-172

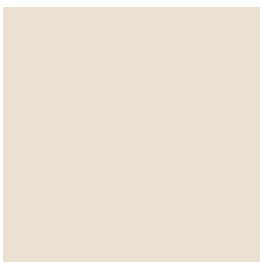


DARK BLUE
M-55C



DARK GREY
M-4AT

MELAMINE COLOURS



CREAM
M-183



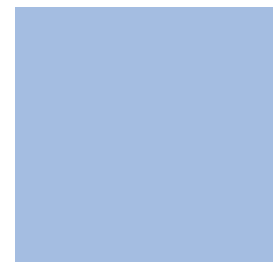
YELLOW
M-22G



ORANGE
M-28G



GREEN
M-023



LIGHT BLUE
M-U522



ALUMINIUM
M-72E



BLACK
M-231



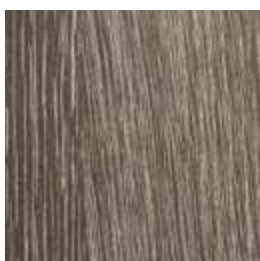
BEECH
MM-240



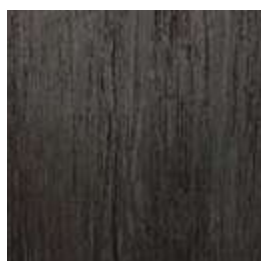
ACACIA
M-50D



CALEDORIAN OAK
M-515



JOPLIN OAK
M-17N



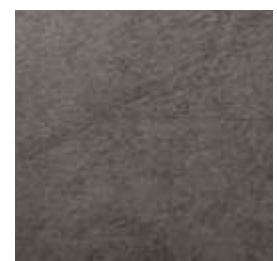
JACKET OAK
M-75V



TAIGA ASH
M-18N



APOLO CEMENT
M-99Q



TEIDE CEMENT
M-06F



METALLIC COLOURS (CHASSIS)

STANDARD COLOUR



RAL 7035
Luminous grey
Código HEX: #c5c7c4

GROUP 1



RAL 5010
Gencana blue
Código HEX: #004f7c

RAL 9010
Pure white
Código HEX: #f1ece1

RAL 3000
Red
Código HEX: #a72920

RAL 6034
Pastel turquoise
Código HEX: #7aacac

RAL 7016
Anthracite grey
Código HEX: #383e42

RAL 9005
Intense black
Código HEX: #0e0e10

GROUP 2



RAL 9001
Cream white
Código HEX: #e9e0d2

RAL 1017
Saffron yellow
Código HEX: #f6a950

RAL 1021
Rapeseed yellow
Código HEX: #f6b600

RAL 2004
Pure orange
Código HEX: #e25303

RAL 3017
Pink
Código HEX: #cb555d



RAL 3005
Wine red
Código HEX: #59191f

RAL 4005
Lilac
Código HEX: #76689a

RAL 6029
Mint green
Código HEX: #006f3d

RAL 5015
Sky blue
Código HEX: #007cb0

RAL 5023
Distant blue
Código HEX: #42698c

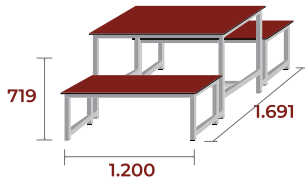


RAL 9006
White aluminium
Código HEX: #a1a1a0

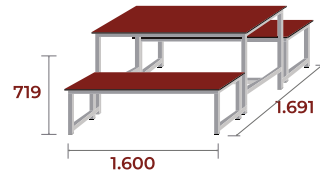
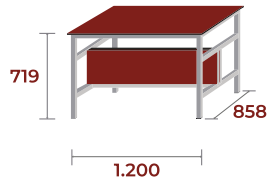
RAL 7036
Platinum grey
Código HEX: #979392

COMBINATIONS AND DIMENSIONS

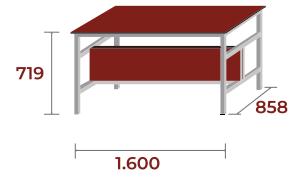
HPL STEEL



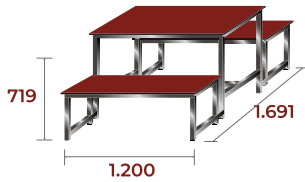
MB-HF12



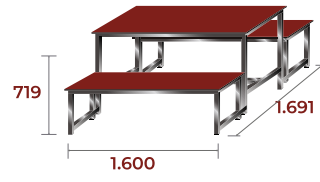
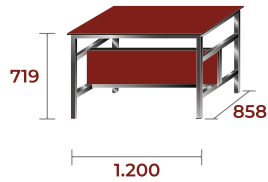
MB-HF16



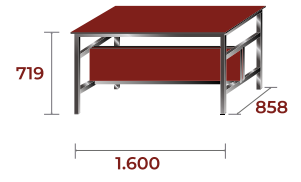
HPL INOX



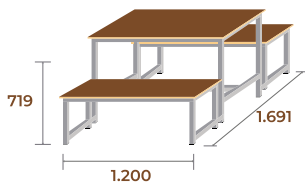
MB-IF12



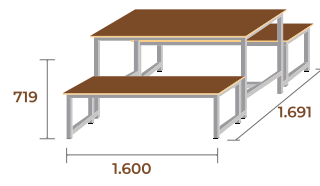
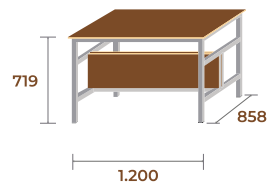
MB-IF16



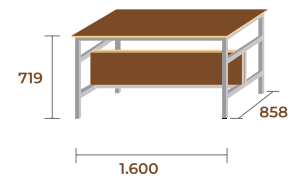
MELAMINA STEEL



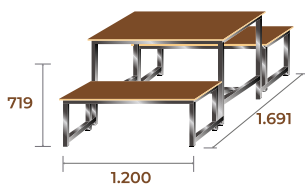
MB-HM12



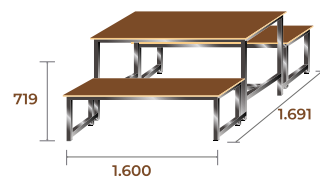
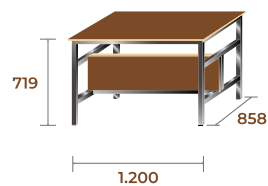
MB-HM16



MELAMINA INOX



MB-IM12



MB-IM16

